



**W**  
WATKINS

**RK**  
REIMERS KAUFMAN  
CONCRETE PRODUCTS

**CC**  
CHRISTENSEN  
CONCRETE PRODUCTS

**KCB**  
KEARNEY  
CRETE & BLOCK

Masonry Flipbook

# Nebraska Built

NEBCO, Inc. has been part of Nebraska and the region's history for over a century. NEBCO's operations span the state of Nebraska and supply the construction industry with materials needed to construct buildings, streets and highways.

As part of a network of block manufactures owned by NEBCO, Watkins Concrete Block Company, Reimers Kaufman Concrete Products Company, Christensen Concrete Products, and Kearney Crete & Block Company strive to produce top-quality product, offer unparalleled customer service and evolve with changing times.

Watkins, located in Omaha, NE, was incorporated in 1946 when they began manufacturing a handful of concrete block products.

Reimers Kaufman, of Lincoln, has been well known in Nebraska for production of concrete construction blocks since 1906.

Christensen Concrete Products was founded in 1947 when Grand Island was preparing to pave its city streets. In 1948 Christensen began production of concrete block.

Kearney Crete & Block began in 1946 supplying ready mixed concrete as well as manufactured concrete masonry units.

Today, all four companies manufacture over 400 items including standard concrete block, segmental retaining wall components and architectural concrete block. 98% of the aggregates used to make these products are sourced within Nebraska. Other product lines include concrete and clay pavers, clay face brick, manufactured stone veneer, natural stone, caulking, sealants and a variety of accessory products for both the residential and commercial construction and landscaping markets.

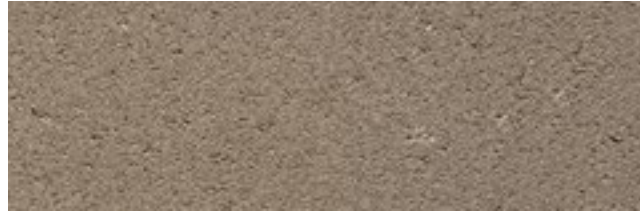
The teams at Watkins, Reimers Kaufman, Kearney Crete & Block, and Christensen Concrete take great pride in producing the highest quality products, sourced right here in our own backyard. And for these reasons, we are Nebraska Built.







# Standard Block Colors



Gray (Base Color)

*Standard*



Gray (Base Color)

*Rockfaced*



Chocolate

*Standard*



Chocolate

*Rockfaced*



Goldenrod

*Standard*



Goldenrod

*Rockfaced*



Medium Brown

*Standard*



Medium Brown

*Rockfaced*



Mocha

*Standard*



Mocha

*Rockfaced*



Sahara

*Standard*



Sahara

*Rockfaced*



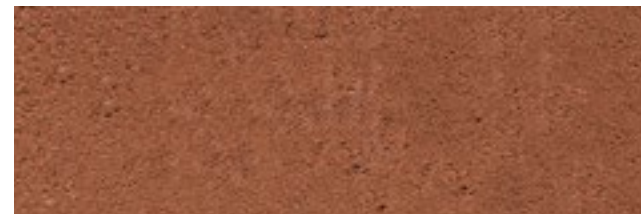
Sand

*Standard*



Sand

*Rockfaced*



Terracotta

*Standard*



Terracotta

*Rockfaced*



Tile Red

*Standard*



Tile Red

*Rockfaced*



Wheat

*Standard*



Wheat

*Rockfaced*



# Premium Block Colors



Biscotti

*Standard*



Biscotti

*Rockfaced*



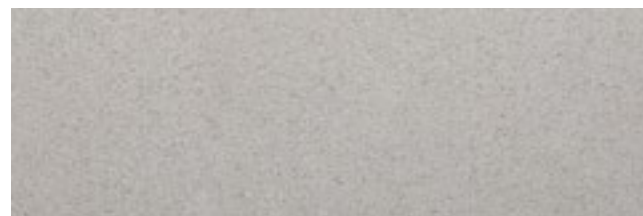
Champagne

*Standard*



Champagne

*Rockfaced*



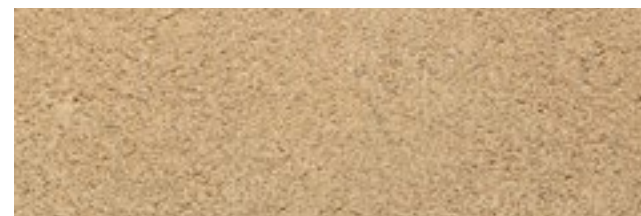
Cotton

*Standard*



Cotton

*Rockfaced*



Cream

*Rockfaced*



Cream

*Rockfaced*



Linen

*Standard*



Linen

*Rockfaced*



Pewter

*Standard*



Pewter

*Rockfaced*



Smoke

*Standard*



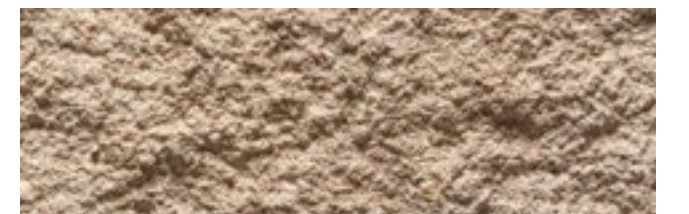
Smoke

*Rockfaced*



Wool

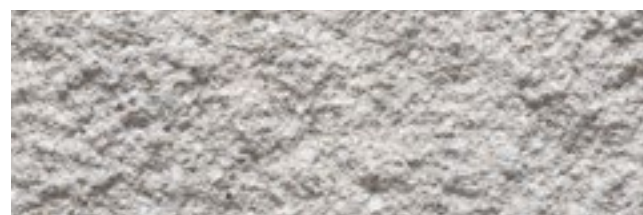
*Standard*



Wool

*Rockfaced*

# Ultra Premium Block Colors



Glacier

*Rockfaced*



Marble

*Rockfaced*



Putty

*Rockfaced*

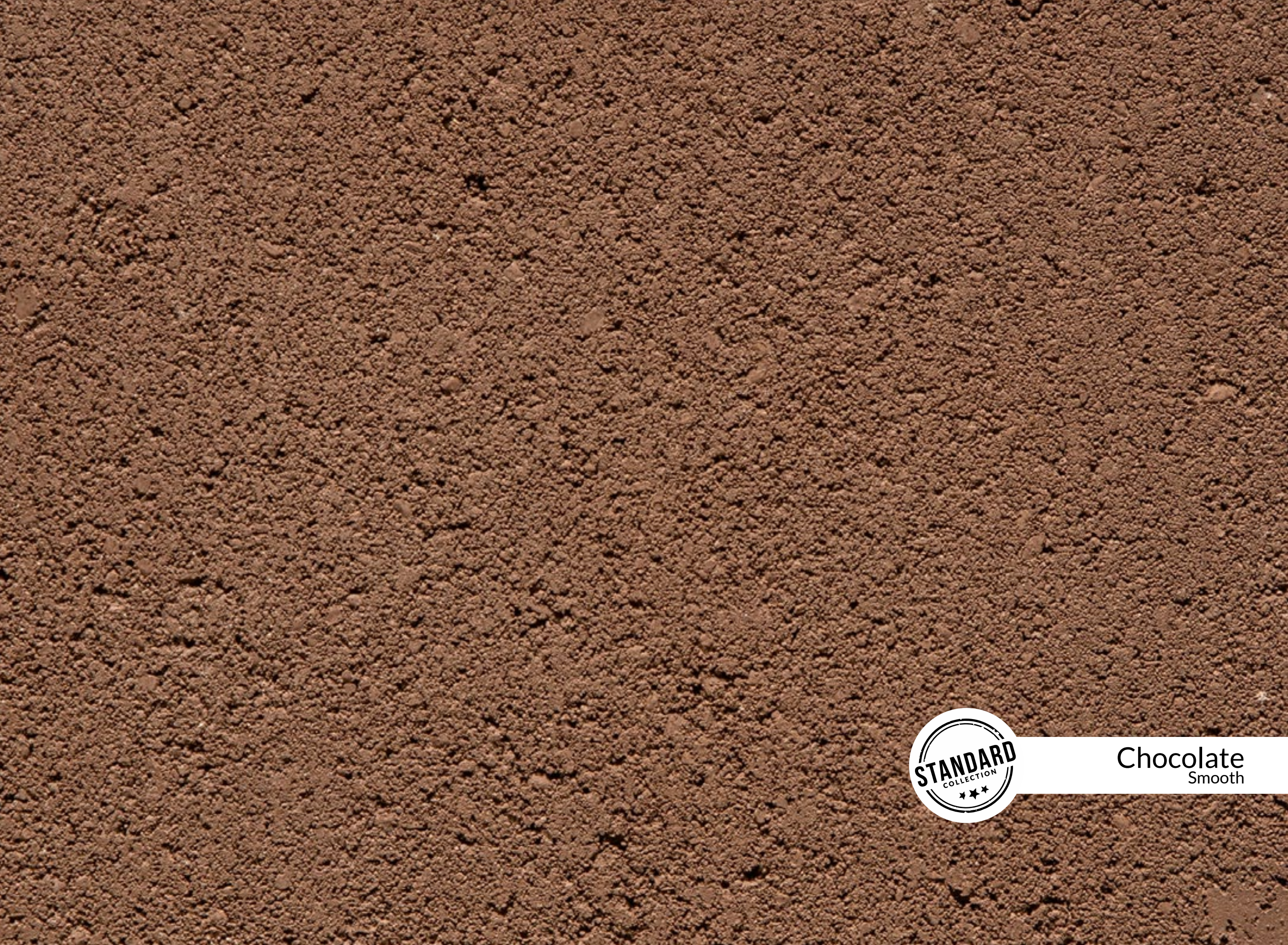




Gray  
Smooth



Gray  
Rockface

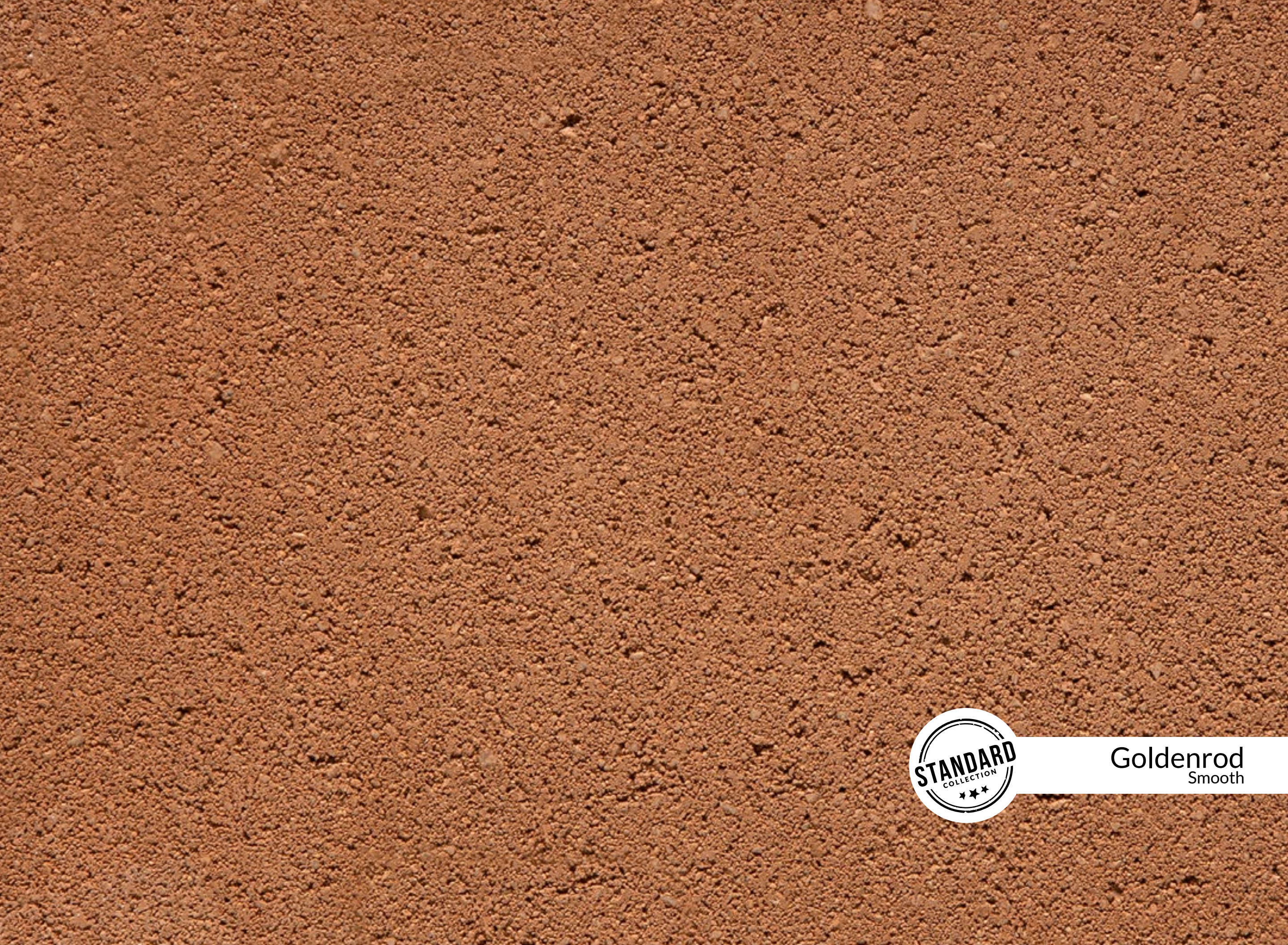


Chocolate  
Smooth





Chocolate  
Rockface



Goldenrod  
Smooth



Goldenrod  
Rockface



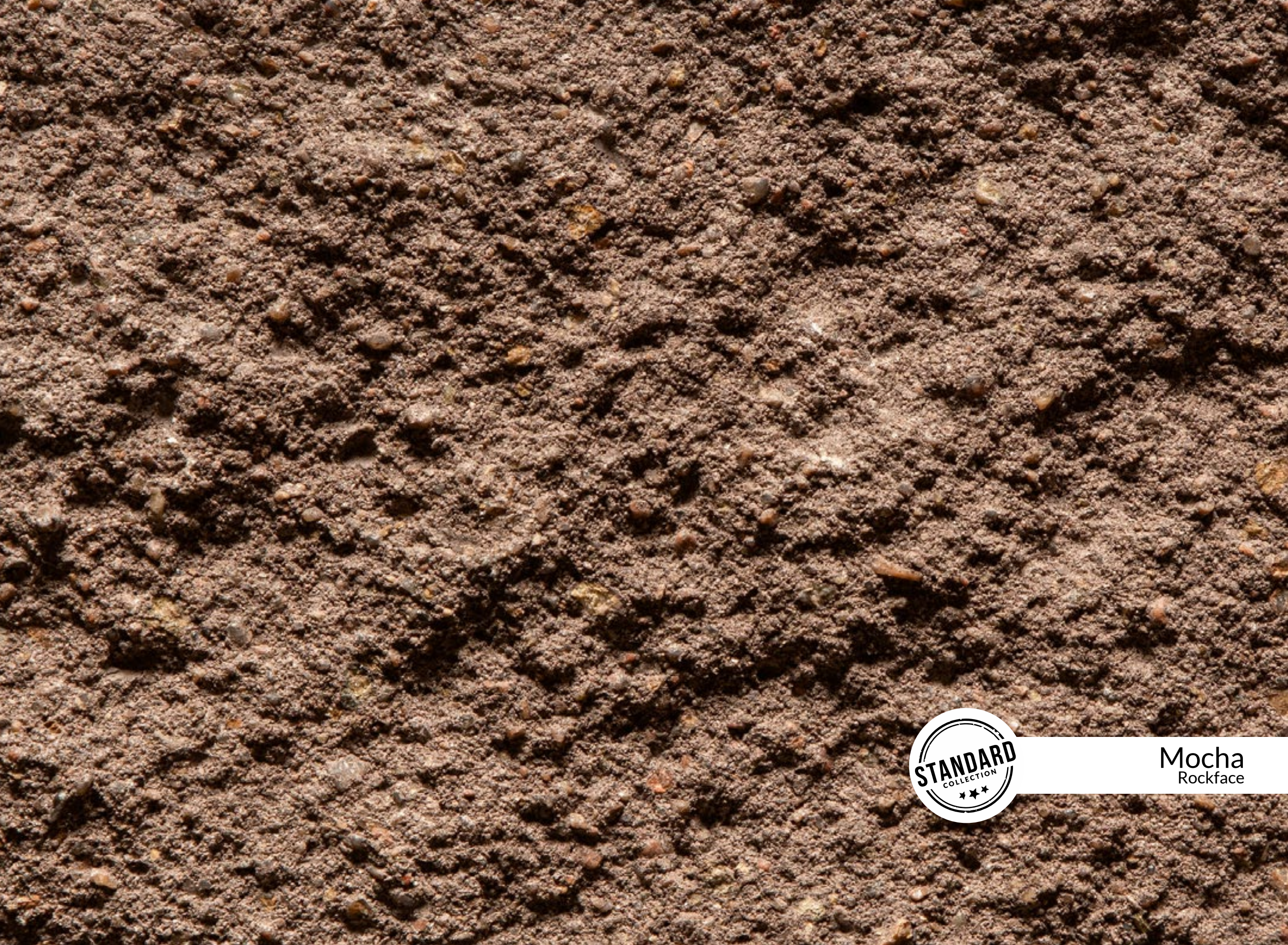
Medium Brown  
Smooth



Medium Brown  
Rockface



Mocha  
Smooth



Mocha  
Rockface



Sahara  
Smooth





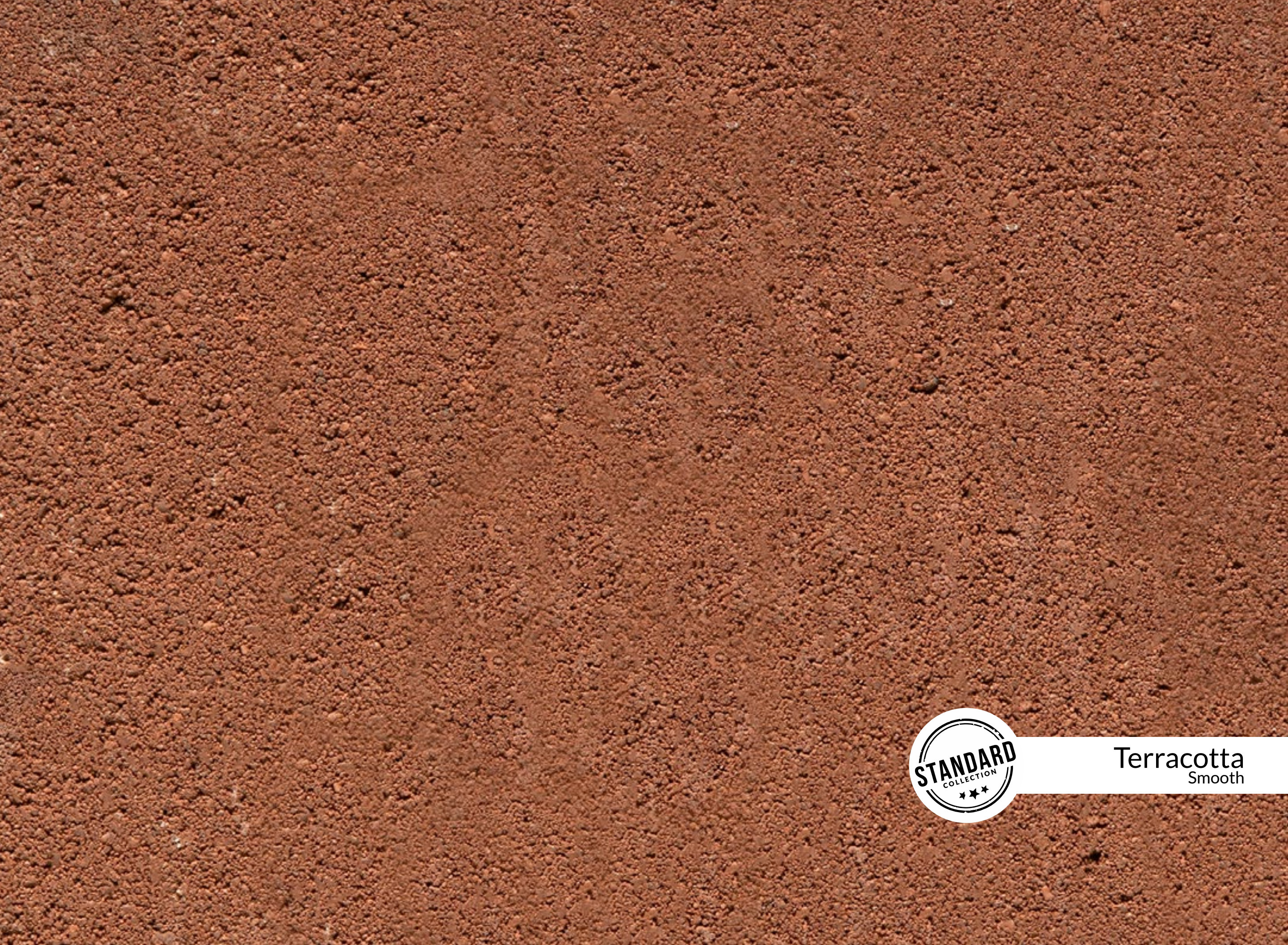
Sahara  
Rockface



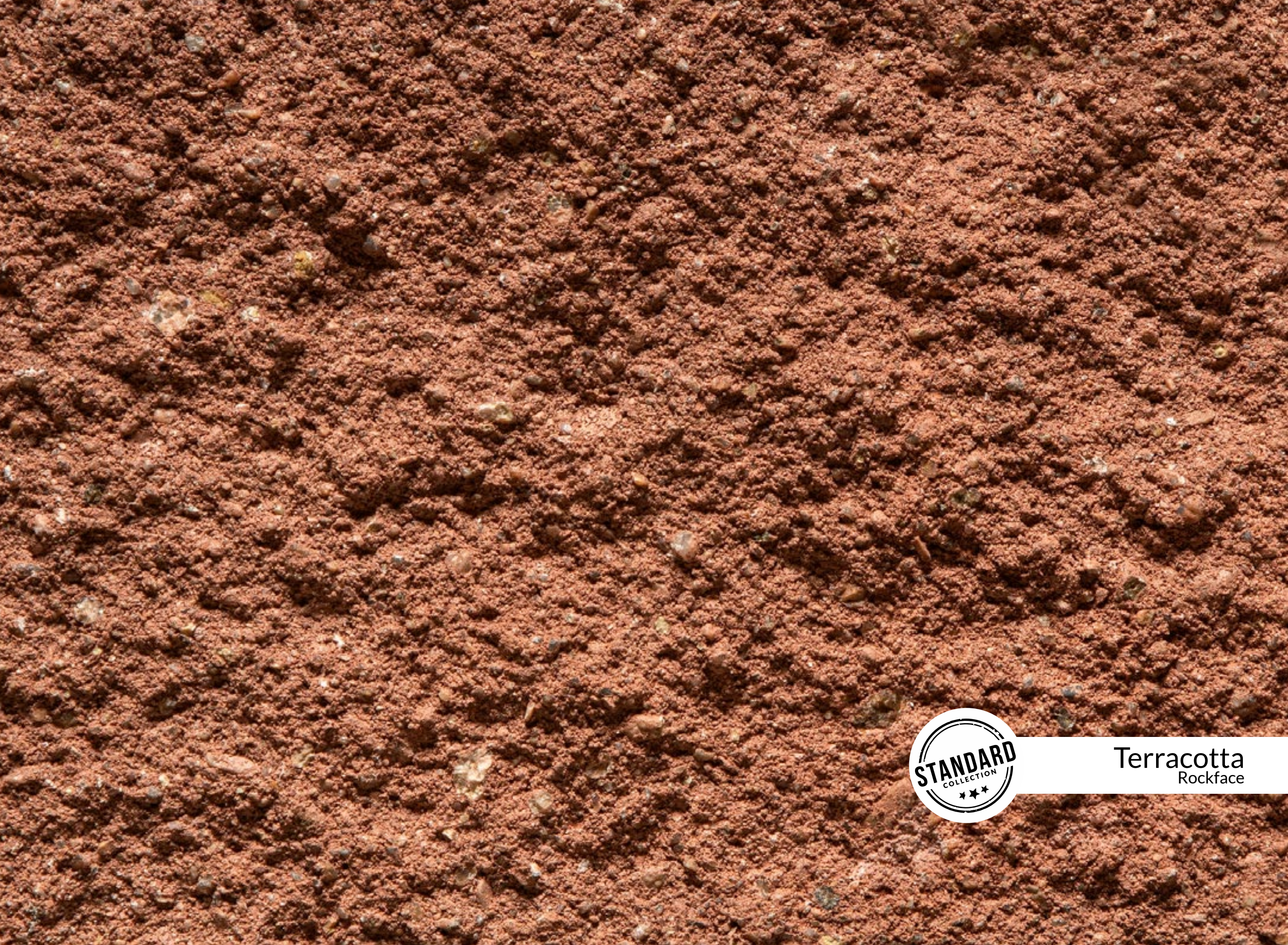
Sand  
Smooth



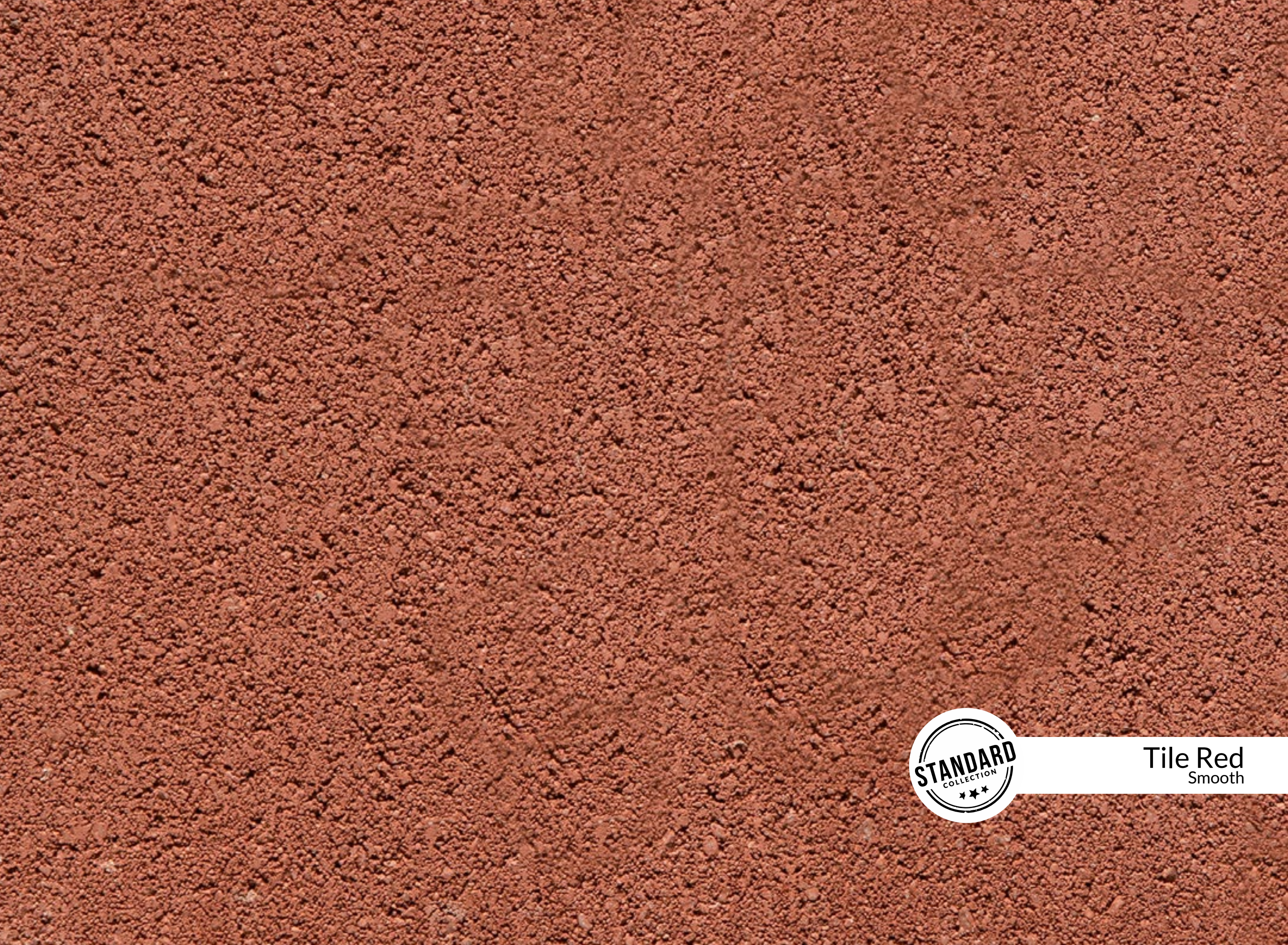
Sand  
Rockface



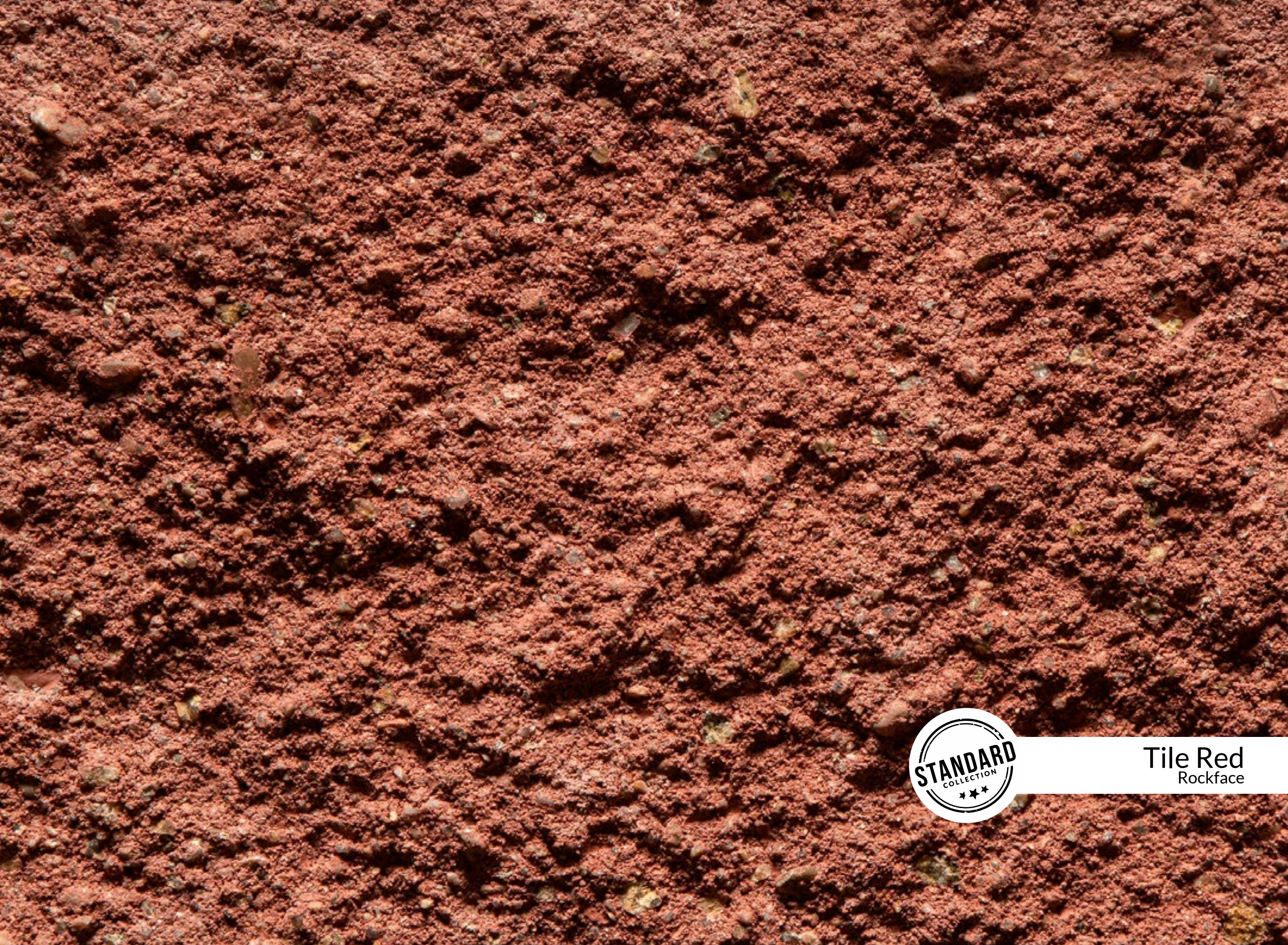
Terracotta  
Smooth



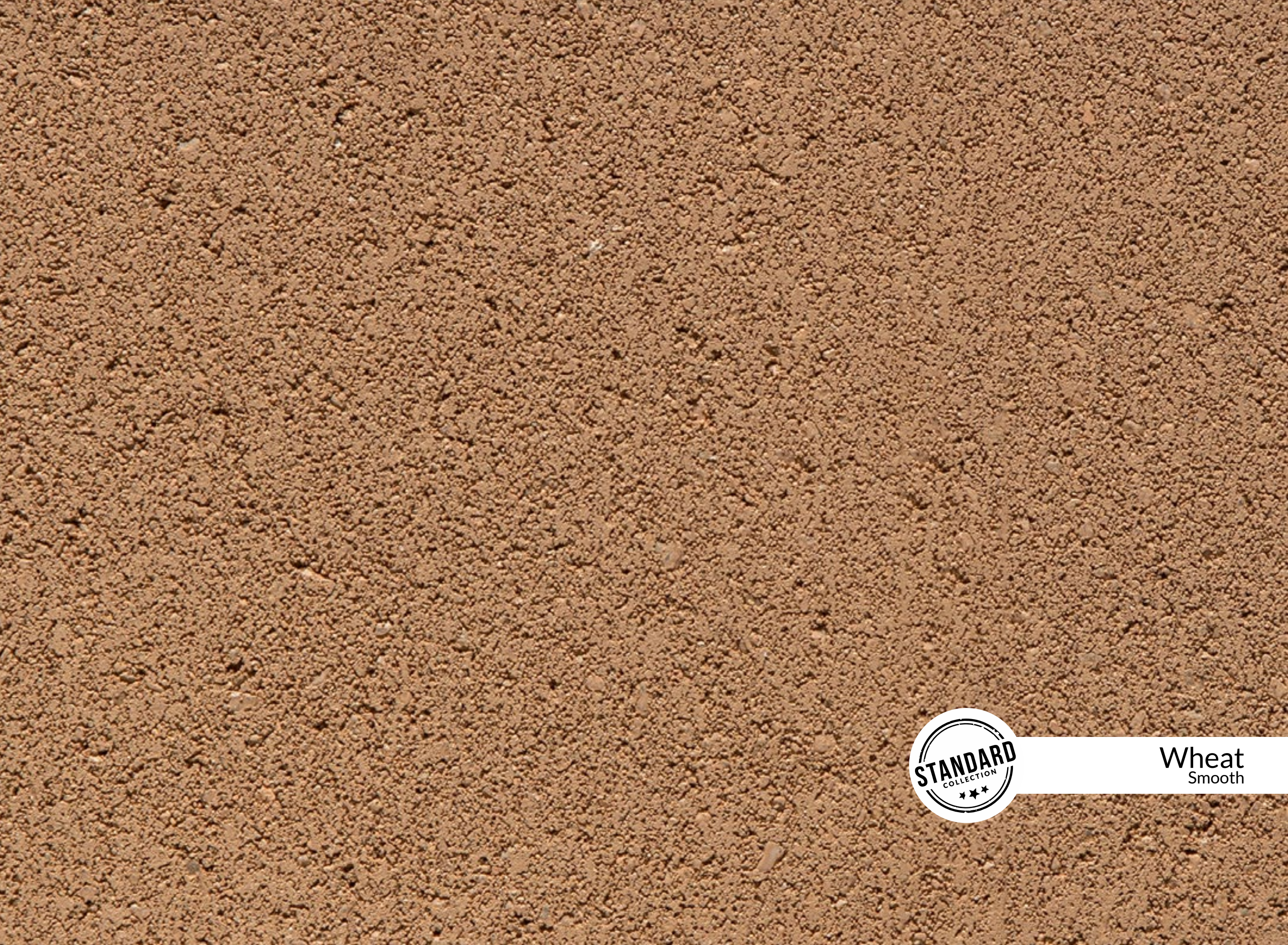
Terracotta  
Rockface



Tile Red  
Smooth



Tile Red  
Rockface



Wheat  
Smooth





Wheat  
Rockface



Biscotti  
Smooth



**Biscotti**  
Rockface



Champagne  
Smooth



Champagne  
Rockface



Cotton  
Smooth



Cotton  
Rockface



Cream  
Smooth





Cream  
Rockface



Linen  
Smooth



Linen  
Rockface



Pewter  
Smooth



Pewter  
Rockface



Smoke  
Smooth



Smoke  
Rockface



Wool  
Smooth





Wool  
Rockface



Glacier  
Rockface



Marble  
Rockface



Putty  
Rockface

**DAYTON FREIGHT**

# Structural and Smooth Shapes



A Block



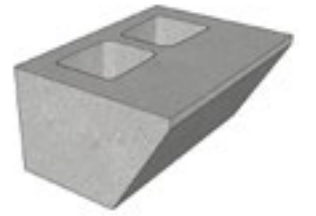
Bay Window



Beam Lintel



Concrete Brick



Corbel



Double Bullnose Half



Double Bullnose



Double Corner



L Corner



Quarter



Single Bullnose Half



Single Bullnose



Utility Block

## Scored and Rockface Shapes



Bond Cream



Cored Half



Cored Slab



Cored Three Quarter



Half High Cored



Half High Solid



Half



Knock Out Bond Cream

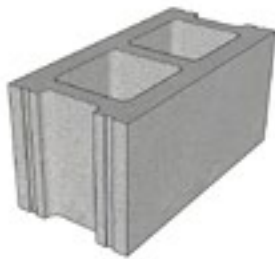


Single Corner



Solid

## Scored Block Patterns



Standard



Three Quarter



Double Score Standard



Single Score



Triple Score Standard

**FRONT** 



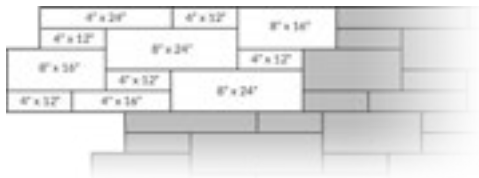


# Legacy Stone

Watkins Concrete Block has developed large-scale architectural veneer units that can achieve a level of design elegance that overshadows the ordinary. Choose from the four example patterns or create your own custom look with new Legacy Stone sizes.

## ashlar patterns

pattern 48  
7.22 ft<sup>2</sup>



pattern 12  
14.22 ft<sup>2</sup>



## running bond patterns

pattern 84



pattern 24





**Watkins Concrete Block**  
144th & Giles  
Omaha, NE 68138  
Phone: (402) 896-0900

[watkinsconcreteblock.com](http://watkinsconcreteblock.com)



**Reimers Kaufman Concrete Products**  
6200 Cornhusker Hwy  
Lincoln, NE 68507  
Phone: (402) 434-1855

[reimerskaufman.com](http://reimerskaufman.com)



**Christensen Concrete Products**  
3990 US-30  
Grand Island, NE 68803  
Phone: (308) 384-7030

[christensenconcrete.com](http://christensenconcrete.com)



**Kearney Crete & Block**  
2908 US-30  
Kearney, NE 68847  
Phone: (308) 237-3126

[kearneycreteandblock.com](http://kearneycreteandblock.com)

A NEBCO COMPANY